

Annual Report

2025



Contents



Message from Key School Bodies	3
Contextual Information	4
Student Outcomes in Standardised National Literacy & Numeracy Testing	7
ETASC Post School Destinations	8
Senior Secondary Outcomes (HSC)	9
Staffing	12
Workforce Composition	13
Details of Teaching Accreditation Status for all Teaching Staff	14
Attendance	15
ETASC Policies	18
Stakeholder Satisfaction	20
Summary Financial Information	23



Context

A message from key ETASC bodies



ET Australia Secondary College would like to thank all of our students, parents, school teachers, staff, board members, volunteers and stakeholders for an extremely successful 2025.



Contextual Information

ETASC is registered with the NSW Education Standards Authority (NESA) and is funded as an independent school by the Australian and NSW governments. In 2025, ETASC continued to offer students places in Years 7 to 12.

Students completing Years 7 and 8 are required to complete a set pattern of study including the following subjects: English, Mathematics, Science, HSIE (History and Geography), PDHPE, Creative Arts, Technology Mandatory and Language (French). These subjects are mandatory and provide students access to a variety of subject areas and assessment types.

In Years 9 and 10, students are required to complete a pattern of study including English, Mathematics, Science, HSIE (History and Geography), and PDHPE. These are the mandatory subjects required to complete Year 10 and no elective subjects are offered.

The HSC course offered in Years 11 & 12 is focused on preparing students for the world of work and ensuring that they are eligible for an ATAR. Subjects offered are: English Standard, Mathematics Standard, Biology, Modern History, Business Studies, and Health & Movement Science (HMS). These subjects are all classed as 2-unit subjects and provide students the required 10 units in Year 12 to nominate for an ATAR.

In addition to the subjects offered by the College, Years 11 & 12 students can also enrol in subjects offered by Distance Education providers and TAFE.

All courses are delivered in accordance with NESA requirements and follow set syllabus documents as prescribed.



Contextual Information

Facilities

ET Australia Secondary College (ETASC) has two campuses located in the Gosford CBD. Our Years 7-10 students are in the Imperial Shopping Centre, 171 Mann St and our Years 11 & 12 students attend class in our premises at 125 Donnison Street. ETASC is not a traditional school setting.

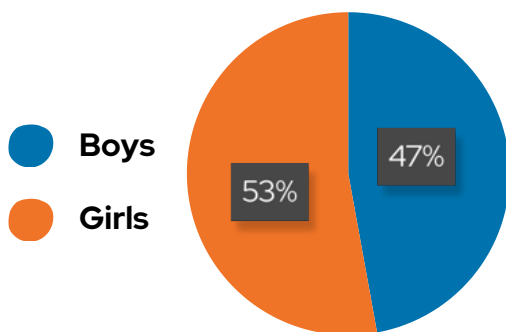
ETASC facilities include:

- 12 general purpose classrooms
- 5 learning intervention classrooms
- 2 computer labs
- Science lab
- Multi purpose hall including professional PA sound system and audience space for 200 people
- Student kitchens
- Chill out zones
- Knowledge Hub
- Common areas
- Staff rooms
- Student amenities

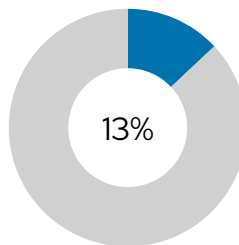


Characteristics of the Student Body

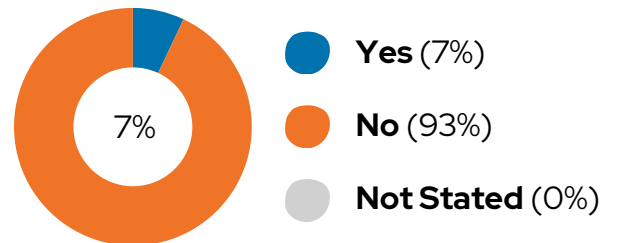
Total Enrolments: 280



Indigenous Students



Language background other than English



Outcomes & Results



Student Outcomes in Standardised National Literacy & Numeracy Testing

2025

Compared to **Students with a similar background**

	Reading	Writing	Spelling	Grammar	Numeracy
Year 7	541	514	515	532	513
Year 9	539	528	538	524	517

All of ETASC's NAPLAN averages for 2025 are categorised as **Close To Average** when compared to students with a similar background.

NAPLAN participation for this school is **95%**

NAPLAN participation for all Australian students is **95%**

NB - A school's NAPLAN test must have a minimum of 11 participants and 80% participation rate for a comparison colour to be available. Grey shading indicates participation did not meet these thresholds.

Further details can be found on the **My School website**

<https://www.myschool.edu.au/school/50559/naplan/results>



Interpreting the table

Selected school's average when compared to students with a similar background

- Well above
- Above
- Close to
- Below
- Well below
- No comparison available



ETASC Post School Destinations

Of our Year 12 graduates in 2025, 24 out of 24 have progressed to further studies or the workforce. The breakdown of this figure is as follows:

- Take up an Apprenticeship or Traineeship - **1 student**
- Workforce participation - **10 students**
- Undertake further studies - **13 students**
- Unknown or seeking employment - **0 students**



46%
Workforce



54%
Further Studies



These outcomes for students represent a **100%** success rate for ETASC with their pathway plans.



Senior Secondary Outcomes (HSC)

Results by Subject and State Comparison

In 2025, 24 students sat for the NSW Higher School Certificate in 15 courses. It was the first year we had students completing school-based traineeships:

- Certificate III in Retail Services with McDonalds.
- Certificate III in Health Services Assistance with NSW Health.

It was also the first year we had students complete TAFE Certificates:

- Certificate II in Animal Care (Full Certificate).
- Certificate III in Events (Statement of attainment).
- Certificate III in Accounts Administration (Statement of attainment).

In general, student achievement was below state level.

The following table shows the average mark for ETASC compared to the state. It is important to note that due to low numbers of students in each subject it is difficult to accurately draw conclusions from this data.

Course	ETASC Mean	State Mean
Biology	63	73
Business Studies	65	74
English Standard	66	72
Mathematics Standard 1	70	71
Mathematics Standard 2	62	72
Modern History	61	74
PDHPE	60	74

The following table identifies the number of students who sat the various HSC subjects in 2025. It shows the percentage of students in ETASC who received a certain band compared to the state-wide average.



Subject	No. of Students	Performance band achievement by number and percentage					
		Band 6	Band 5	Band 4	Band 3	Band 2	Band 1
Biology	14	School: 0 (0%) Statewide: 7%	School: 1 (7%) Statewide: 28%	School: 2 (14%) Statewide: 30%	School: 5 (36%) Statewide: 21%	School: 6 (43%) Statewide: 10%	School: 0 (0%) Statewide: 4%
Business Studies	16	School: 0 (0%) Statewide: 12%	School: 2 (12%) Statewide: 26%	School: 3 (19%) Statewide: 29%	School: 7 (44%) Statewide: 22%	School: 4 (25%) Statewide: 9%	School: 0 (0%) Statewide: 2%
English Standard	23	School: 0 (0%) Statewide: 0.5%	School: 0 (0%) Statewide: 13%	School: 4 (18%) Statewide: 55%	School: 15 (64%) Statewide: 26%	School: 4 (18%) Statewide: 5%	School: 0 (0%) Statewide: 0.5%
Financial Services	1	School: 0 (0%) Statewide: 3%	School: 0 (0%) Statewide: 25%	School: 1 (100%) Statewide: 36%	School: 0 (0%) Statewide: 32%	School: 0 (0%) Statewide: 4%	School: 0 (0%) Statewide: 0%
Hospitality (Kitchen Operation & Cookery)	2	School: 0 (0%) Statewide: 7%	School: 0 (0%) Statewide: 32%	School: 2 (100%) Statewide: 40%	School: 0 (0%) Statewide: 17%	School: 0 (0%) Statewide: 3%	School: 0 (0%) Statewide: 1%
Human Services	1	School: 0 (0%) Statewide: 4%	School: 0 (0%) Statewide: 17%	School: 0 (0%) Statewide: 43%	School: 1 (100%) Statewide: 33%	School: 0 (0%) Statewide: 3%	School: 0 (0%) Statewide: 0%
Industrial Technology	2	School: 0 (0%) Statewide: 9%	School: 0 (0%) Statewide: 15%	School: 0 (0%) Statewide: 31%	School: 1 (50%) Statewide: 30%	School: 1 (50%) Statewide: 13%	School: 0 (0%) Statewide: 2%
Mathematics Standard 1	6	School: 0 (0%) Statewide: 3%	School: 0 (0%) Statewide: 16%	School: 3 (50%) Statewide: 39%	School: 3 (50%) Statewide: 32%	School: 0 (0%) Statewide: 7%	School: 0 (0%) Statewide: 3%
Mathematics Standard 2	11	School: 0 (0%) Statewide: 9%	School: 0 (0%) Statewide: 21%	School: 2 (18%) Statewide: 30%	School: 5 (46%) Statewide: 23%	School: 4 (36%) Statewide: 13%	School: 0 (0%) Statewide: 4%
Modern History	22	School: 0 (0%) Statewide: 10%	School: 1 (5%) Statewide: 26%	School: 4 (18%) Statewide: 34%	School: 8 (36%) Statewide: 18%	School: 7 (32%) Statewide: 9%	School: 2 (9%) Statewide: 3%
PDHPE	12	School: 0 (0%) Statewide: 9%	School: 0 (0%) Statewide: 27%	School: 1 (8%) Statewide: 33%	School: 5 (42%) Statewide: 22%	School: 6 (50%) Statewide: 8%	School: 0 (0%) Statewide: 1%
Retail Services	1	School: 0 (0%) Statewide: 2%	School: 0 (0%) Statewide: 12%	School: 0 (0%) Statewide: 44%	School: 1 (100%) Statewide: 33%	School: 0 (0%) Statewide: 8%	School: 0 (0%) Statewide: 1%



Senior Secondary Outcomes (HSC)

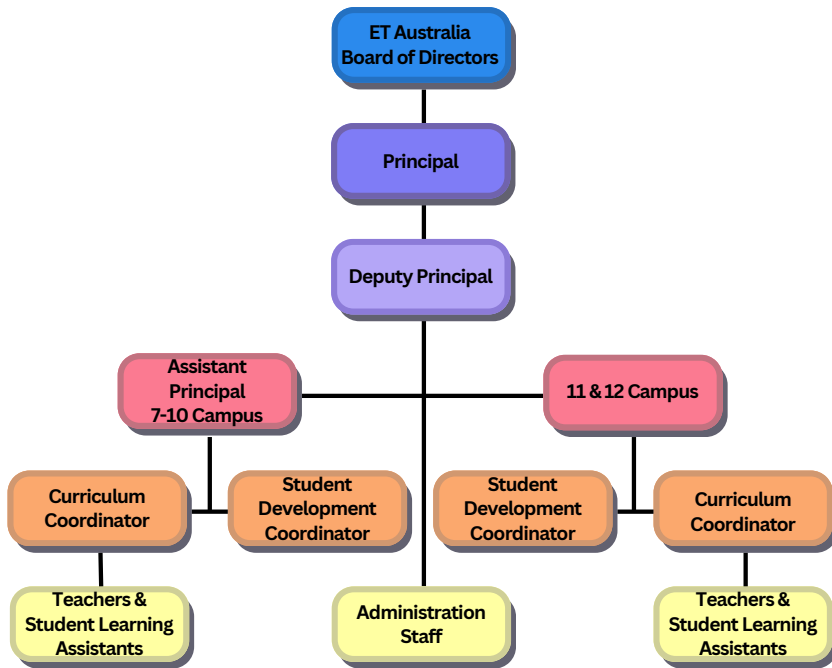
2 Unit Course	School Total	State Total	School A (%)	School B (%)	School C (%)	School D (%)	School E (%)	School None (%)	State A (%)	State B (%)	State C (%)	State D (%)	State E (%)	State None (%)
English Standard	41	36318		12.2	53.66	34.15			4.13	27.27	47.95	16.74	3.38	0.53
Mathematics Standard	39	43006		2.56	25.64	51.28	20.51		9.16	22.09	36.8	22.85	8.49	0.6
Biology	33	26946		9.09	33.33	45.45	12.12		12.65	28.24	39.55	15.6	3.7	0.26
Business Studies	37	27077		16.22	56.76	24.32	2.7		12.24	28.97	37.16	16.23	4.89	0.51
Modern History	40	14892		7.5	50	35	7.5		16.02	31.53	33.72	13.86	4.3	0.58
PDHPE	38	22412			21.05	65.79	13.16		11.37	27.46	37.65	18.57	4.54	0.4



Staffing



Workforce Composition



In 2025, ET Australia Secondary College had 23 full-time teachers and 10 part-time teachers as well as 9 full-time and 11 part-time student learning assistants. ETASC currently has 5 members of staff who identify as Aboriginal.

Staff Analysis

School Staff	Number
Teaching Staff	33
Full-time equivalent teaching staff	23
Non-teaching staff	35
Full-time equivalent non-teaching staff	24.9



Details of Teaching Accreditation Status for all Teaching Staff

Level of Accreditation	Number of Teachers
Pre-2004 Teachers	4
Conditional	0
Provisional	1
Proficient	28
Highly Accomplished (voluntary accreditation)	0
Lead Teacher (voluntary accreditation)	0
Total Number of Teachers	33



Attendance



Student Attendance Rates

Average Attendance Statistics 2024

In 2025, 74.83% of students attended school on average each school day, down from an average of 77.35% in 2024.

For whole school student attendance rates, please refer to the school's data on the **My School website**.

<http://www.myschool.edu.au>

Year 7	Year 8	Year 9	Year 10	Year 11	Year 12
79.60%	72.14%	72.15%	75.17%	77.55%	72.33%



Management of school non-attendance

Monitoring Attendance

Attendance is recorded at the beginning of each period by the class teacher. Parents/carers are contacted up to three times for unexplained student absences. The first contact is from Compass, the school's management system, on the day of an absence without notice via an automatically scheduled email. In the event of the email system not working, parents/carers will be phoned to explain their student's absence.

If an absence remains unexplained, a second contact is attempted via a manual email generated by administration staff.

If required, a third attempt at contact is made by administration staff via a phone call. If no explanation is received within 7 days, the attendance is recorded as "unexplained/unjustified."

Partial absences are monitored and investigated by administration staff on a daily basis.

At the end of each term, if a student has five or more unexplained absences, the School Administration Officer sends out an email to the parents/carers requesting information for the attendance issues.

Attendance is recorded using the school management system (Compass). Any student in danger of falling below the required attendance level is referred to the Deputy Principal or Assistant Principal for follow up.



ETASC Policies



The following ET Australia Secondary College policies are accessible from our website: [Policies & Procedures](https://etaustralia.com/secondary-college/policies-procedures/)

<https://etaustralia.com/secondary-college/policies-procedures/>

- Child Protection and Working With Children Policy & Procedure
- Enrolment Policy & Procedure
- Discipline Policy & Procedure
- Complaints & Grievances Policy & Procedure
- Malpractice in Assessment Policy & Procedure

(Anti-bullying information can be found in our Discipline Policy)



Stakeholder Satisfaction



Parent, Student and Teacher Satisfaction

ET Australia Secondary College Student Feedback

Since I moved to ETASC I feel much more settled and safer in the classroom space. I've made new friends, and I feel welcomed by both the students and teachers. My grades have improved, and I feel more confident in my learning capabilities.

- Annie (Year 9)

ET Australia Secondary College is the type of school that I enjoy going to. Some positives about it are the fact that the teachers are kind, caring and supportive. They have interesting subjects that are engaging and fun. The teachers are always there to make adjustments for me so that school is a welcoming place to come.

- Caelan (Year 7)

ET Australia Secondary College creates an environment where students are able to feel comfortable and engaged in learning. The teachers provide an excellent amount of support for each individual student, leaving no one feeling as if they were unsupported, during both normal class time and assessment periods. The availability of Student Learning Assistants also provides students with extra support in the classrooms.

- Nate (Year 12)

ET Australia Secondary College Parent Feedback

My son is currently in Year 11 at ET Australia Secondary College and we have loved our journey with the school. My son's primary school years were a struggle due to lack of support and understanding of my son's needs and our high school options are very limited in our area and I knew he would struggle in a mainstream high school.

I heard about ET from a friend and as soon as I had a tour and a meeting with the Principal my mind was immediately put at ease and we knew that this was the school for us.

- Kirsty

Thank you for showing Georgie that school doesn't have to feel hard – that learning, and maths in particular, can be enjoyable and a positive place to be. There hasn't been a single time this year that she has come home in tears saying how much she hates maths. Not once has she asked to stay home because of a maths assessment. Instead, she has come home beaming with pride about her results and is still in disbelief that she earned a B in maths this year.

- Jess

I am a big believer in ET! Sending Anakin here was the best thing I ever did.

- Susanna



Parent, Student and Teacher Satisfaction

ET Australia Secondary College Teaching Staff Feedback

ET Australia Secondary College is a genuinely positive and rewarding place to work. There's a strong sense of community, built through the meaningful connections with students and the supportive relationships among staff. The respect and appreciation shown by students make every day fulfilling, and the effort staff put in to create a safe and welcoming environment really shows—students enjoy being here. It's a workplace where you truly feel the impact of what you do.

- Max

Working at ET Australia has been the best teaching experience. I love the strong rapport we build with our students and the way we are able to support them across so many different areas. The staff are so friendly and welcoming, I feel like I have found my people! The way that the staff are respected and cared for by corporate with events like our "Big Day Out" are a highlight and help us feel appreciated for the work we do.

- Fiona

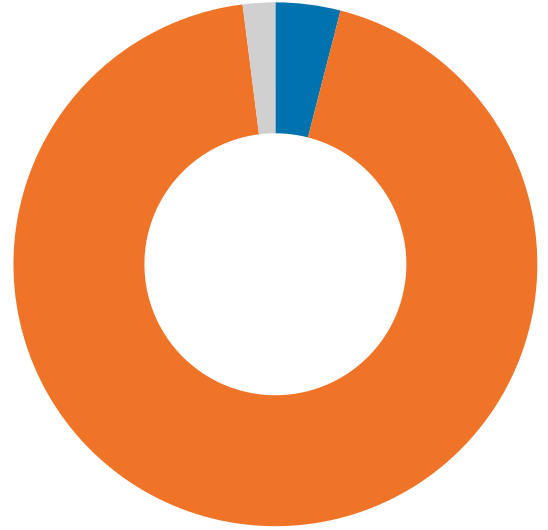


Summary Financial Information



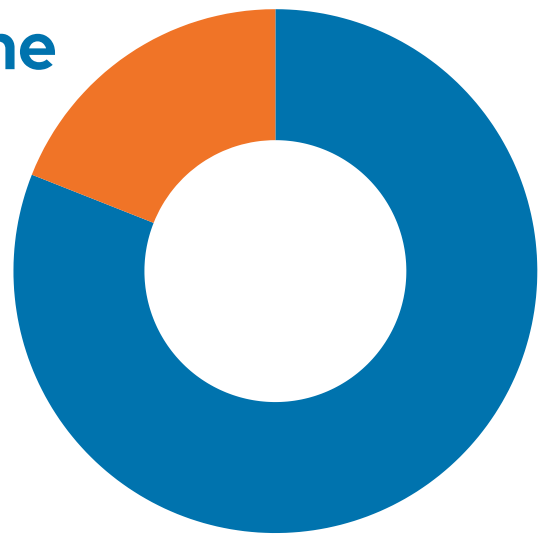
Income Sources

- 4%** School Fees
- 94%** Grants / Government Income
- 2%** Interest & Other Income



Grants / Government Income

- 81%** Commonwealth
- 19%** State
- 0%** Other



Expenditure

- 75%** Salary & Salary Related Expenses
- 25%** Non Salary Expenses

