

Annual Report

2024



etaustralia
SECONDARY COLLEGE



Contents



Message from Key School Bodies	3
Contextual Information	4
Student Outcomes in Standardised National Literacy & Numeracy Testing	7
ETASC Post School Destinations	8
Senior Secondary Outcomes (HSC)	9
Staffing	12
Workforce Composition	13
Details of Teaching Accreditation Status for all Teaching Staff	14
Attendance	15
ETASC Policies	18
Stakeholder Satisfaction	20
Summary Financial Information	23



Context

A message from key ETASC bodies

**ET Australia Secondary College
would like to thank all of our
students, parents, school
teachers, staff, board members,
volunteers and stakeholders for
an extremely successful 2024.**

ETASC is registered with the NSW Education Standards Authority (NESA) and is funded as an independent school by the Australian and NSW governments. In 2024, ETASC continued to offer students places in Years 7 to 12.

Students completing Years 7 and 8 are required to complete a set pattern of study including the following subjects: English, Mathematics, Science, HSIE (History and Geography), PDHPE, Creative Arts, Technology Mandatory and Language – French. These subjects are mandatory and provide students access to a variety of subject areas and assessment types.

In Years 9 and 10, students are required to complete a pattern of study including English, Mathematics, Science, HSIE (History and Geography), and PDHPE. These are the mandatory subjects required to complete Year 10 and no elective subjects are offered.



Contextual Information

The HSC course offered in Years 11 & 12 is focused on preparing students for the world of work and ensuring that they are eligible for an ATAR. Subjects offered are: English Standard, Mathematics Standard, Biology, Modern History, Business Studies, and PDHPE. These subjects are all classed as 2-unit subjects and provide students the required 10 units in Year 12 to nominate for an ATAR.

In addition to the subjects offered by the College, Years 11 & 12 students can also enrol in subjects offered by Distance Education.

All courses are delivered in accordance with NESA requirements and follow set syllabus documents as prescribed.

Facilities

ET Australia Secondary College (ETASC) has two campuses located in the Gosford CBD. Our Years 7-10 students are in the Imperial Shopping Centre, 171 Mann St and our Years 11 & 12 students attend class in our premises at 125 Donnison Street. ETASC is not a traditional school setting.

ETASC facilities include:

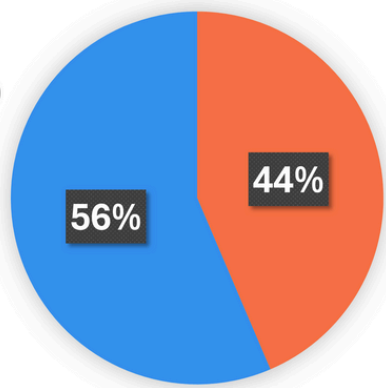
- 12 General purpose classrooms
- 5 Learning intervention classrooms
- 2 Computer labs
- A Science lab
- A Multi purpose hall including professional PA sound system and audience space for 200 people
- Student kitchen
- Chill out zones
- Knowledge Hub
- Common areas
- Staff rooms
- Student amenities



Characteristics of the Student Body

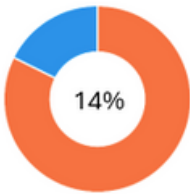
Total Enrolments: 280

- Boys
- Girls



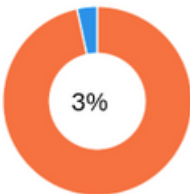
Full-time equivalent enrolments 280.0

Indigenous Students



Language background other than English

- Yes (3%)
- No (97%)
- Not stated (0%)



Outcomes & Results



Student Outcomes in Standardised National Literacy & Numeracy Testing

2024					
Compare to	Students with a similar background			All Australian students	
	Reading	Writing	Spelling	Grammar	Numeracy
Year 7	503	498	499	494	489
Year 9	558	554	562	536	537

NAPLAN participation for this school is 97%
NAPLAN participation for all Australian students is 95%

NB - A school's NAPLAN test must have a minimum of 11 participants and 80% participation rate for a comparison colour to be available. Grey shading indicates participation did not meet these thresholds.

Further details can be found on the My School website
<https://www.myschool.edu.au/school/50559/naplan/results#>



Interpreting the table

Selected school's average when compared to students with a similar background

- Well above
- Above
- Close to
- Below
- Well below
- No comparison available



ETASC Post School Destinations

Of our Year 12 graduates in 2024, 23 out of 23 have progressed to further studies or the workforce. The breakdown of this figure is as follows:

- Take up an Apprenticeship or Traineeship - 0 students
- Workforce participation - 3 students
- Undertake further studies - 20 students

Workforce 13%

Further studies 87%



These outcomes for students represent a **100%** success rate for ETASC with their pathway plans.



Senior Secondary Outcomes (HSC)

Results by Subject and State Comparison

In 2024, 24 students sat for the NSW Higher School Certificate in 12 courses.

This year was the first time a Band 6 (90–100 marks) was achieved in English Standard and Mathematics Standard 2. It was the first year a non-examinable course was studied, 1 unit Exploring Early Childhood. In general, student achievement was below state level.

The following table shows the average mark for ETASC compared to the state. It is important to note that due to low numbers of students in each subject it is difficult to accurately draw conclusions from this data.

Course	ETASC Mean	State Mean
Biology	63	74
Business Studies	64	73
English Standard	67	71
Mathematics Standard 1	70	71
Mathematics Standard 2	71	72
Modern History	63	75
PDHPE	66	74

The following table identifies the number of students who sat the various HSC subjects in 2024. It shows the percentage of students in ETASC who received a certain band compared to the state-wide average.



Subject	No. of Students	Performance band achievement by number and percentage					
		Band 6	Band 5	Band 4	Band 3	Band 2	Band 1
Ancient History	1	School: 0 (0%) Statewide: 10%	School: 0 (0%) Statewide: 28%	School: 0 (0%) Statewide: 28%	School: 1 (100%) Statewide: 19%	School: 0 (0%) Statewide: 10%	School: 0 (0%) Statewide: 5%
Biology	13	School: 0 (0%) Statewide: 7%	School: 0 (0%) Statewide: 29%	School: 5 (39%) Statewide: 34%	School: 4 (31%) Statewide: 18%	School: 2 (15%) Statewide: 10%	School: 2 (15%) Statewide: 2%
Business Studies	14	School: 0 (0%) Statewide: 10%	School: 1 (7%) Statewide: 27%	School: 4 (29%) Statewide: 27%	School: 5 (36%) Statewide: 23%	School: 1 (7%) Statewide: 9%	School: 3 (21%) Statewide: 4%
English Standard	24	School: 1 (4%) Statewide: 0.5%	School: 3 (13%) Statewide: 13%	School: 7 (29%) Statewide: 54%	School: 4 (17%) Statewide: 25%	School: 8 (33%) Statewide: 7%	School: 1 (4%) Statewide: 0.5%
Legal Studies	1	School: 0 (0%) Statewide: 15%	School: 0 (0%) Statewide: 28%	School: 0 (0%) Statewide: 26%	School: 1 (100%) Statewide: 20%	School: 0 (0%) Statewide: 9%	School: 0 (0%) Statewide: 2%
Mathematics Standard 1 Examination	9	School: 0 (0%) Statewide: 3%	School: 2 (22%) Statewide: 20%	School: 2 (22%) Statewide: 35%	School: 2 (22%) Statewide: 32%	School: 3 (34%) Statewide: 9%	School: 0 (0%) Statewide: 1%
Mathematics Standard 2	7	School: 1 (14%) Statewide: 9%	School: 1 (14%) Statewide: 20%	School: 1 (14%) Statewide: 30%	School: 4 (58%) Statewide: 24%	School: 0 (0%) Statewide: 13%	School: 0 (0%) Statewide: 4%
Mathematics Advanced	3	School: 0 (0%) Statewide: 22%	School: 0 (0%) Statewide: 28%	School: 3 (100%) Statewide: 28%	School: 0 (0%) Statewide: 17%	School: 0 (0%) Statewide: 4%	School: 0 (0%) Statewide: 1%
Modern History	21	School: 0 (0%) Statewide: 11%	School: 0 (0%) Statewide: 29%	School: 7 (33%) Statewide: 32%	School: 8 (38%) Statewide: 19%	School: 4 (19%) Statewide: 8%	School: 2 (10%) Statewide: 1%
Music 1	2	School: 0 (0%) Statewide: 20%	School: 1 (50%) Statewide: 47%	School: 0 (0%) Statewide: 22%	School: 1 (50%) Statewide: 8%	School: 0 (0%) Statewide: 2%	School: 0 (0%) Statewide: 1%
PDHPE	20	School: 0 (0%) Statewide: 9%	School: 0 (0%) Statewide: 26%	School: 8 (40%) Statewide: 32%	School: 5 (25%) Statewide: 24%	School: 7 (35%) Statewide: 8%	School: 0 (0%) Statewide: 1%

Senior Secondary Outcomes (HSC)

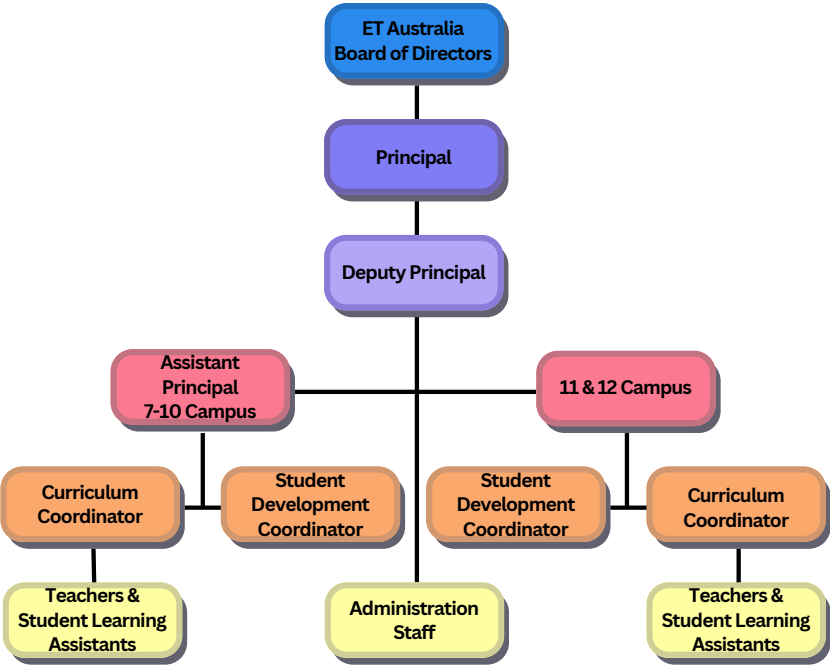
2 Unit Course	School Total	State Total	School A (%)	School B (%)	School C (%)	School D (%)	School E (%)	School None (%)	State A (%)	State B (%)	State C (%)	State D (%)	State E (%)	State None (%)
English Standard	41	36318		12.2	53.66	34.15			4.13	27.27	47.95	16.74	3.38	0.53
Mathematics Standard	39	43006		2.56	25.64	51.28	20.51		9.16	22.09	36.8	22.85	8.49	0.6
Biology	33	26946		9.09	33.33	45.45	12.12		12.65	28.24	39.55	15.6	3.7	0.26
Business Studies	37	27077		16.22	56.76	24.32	2.7		12.24	28.97	37.16	16.23	4.89	0.51
Modern History	40	14892		7.5	50	35	7.5		16.02	31.53	33.72	13.86	4.3	0.58
PDHPE	38	22412			21.05	65.79	13.16		11.37	27.46	37.65	18.57	4.54	0.4



Staffing



Workforce Composition



In 2024, ET Australia Secondary College had 19 full-time teachers and 11 part-time teachers as well as 7 full-time and 11 part-time student learning assistants. ETASC currently has 4 members of staff who identify as Aboriginal.

Staff Analysis

School Staff	Number
Teaching Staff	33
Full-time equivalent teaching staff	27
Non-teaching staff	36
Full-time equivalent non-teaching staff	22.1



Details of Teaching Accreditation Status for all Teaching Staff

Level of Accreditation	Number of Teachers
Pre-2004 Teachers	4
Conditional	0
Provisional	1
Proficient	28
Highly Accomplished (voluntary accreditation)	0
Lead Teacher (voluntary accreditation)	0
Total Number of Teachers	33



Attendance



Student Attendance Rates

Average Attendance Statistics 2024

In 2024, 77.35% of students attended school on average each school day, up from an average of 77.29% in 2023.

For whole school student attendance rates, please refer to the school's data on the My School website:
<http://www.myschool.edu.au>

Year 7	Year 8	Year 9	Year 10	Year 11	Year 12
80.7%	74.74%	73.06%	76.51%	80%	79%



Management of school non-attendance

Monitoring Attendance

Attendance is recorded at the beginning of each period by the class teacher. Parents/carers are contacted up to three times for unexplained student absences. The first contact is from the school's student management system Compass on the day of an absence without notice via an automatically scheduled email. In the event of the email system not working, parents/carers will be phoned to explain their student's absence.

If an absence remains unexplained, a second contact is attempted via a manual email generated by administration staff.

If required, a third attempt at contact is made by administration staff via a phone call. If no explanation is received within 7 days, the attendance is recorded as "unexplained/unjustified."

Partial absences are monitored and investigated by administration staff on a daily basis.

At the end of each term, if a student has five or more unexplained absences, the School Administration Officer sends out an email to the parents/carers requesting information for the attendance issues.

Attendance is recorded using the school data system (Compass). Any student in danger of falling below the required attendance level is referred to the Deputy Principal or Assistant Principal for follow up.



ETASC Policies



The following ET Australia Secondary College policies are accessible from our website: <https://etaustralia.com/secondary-college/policies-procedures/>

- Child Protection and Working With Children Policy & Procedure
- Enrolment Policy & Procedure
- Discipline Policy & Procedure
- Complaints & Grievances Policy & Procedure
- Malpractice in Assessment Policy & Procedure

(Anti-bullying information can be found in our Discipline Policy)



Stakeholder Satisfaction



Parent, Student and Teacher Satisfaction

ET Australia Secondary College Student Feedback

The school is such a fun and creative place to learn. I love the way the teachers help support me and all my endeavours. All the extra-curriculum activities like Duke of Edinburgh and Distance Education are helping me to pursue my dreams and goals. This is why I love coming to ET Australia Secondary College.

- Liam (Year 11)

ET Australia Secondary College creates a safe and engaging learning environment. The staff provide a lot of support to those who need it such as fidget tools, font sizes, scaffolds, Student Learning Assistants, and a support dog, named buddy. All the staff are friendly and welcoming. The mentoring program is another helpful support where I can go for assistance with assessments and study skills along with pathway goal setting.

-Eli (Year 12)

ET Australia Secondary College is a supportive school: the teachers are always willing to help and will adjust my work so that I can access it. Everyone at the school is really nice, open and welcoming. Being at ET has made me more confident and I feel ready for my next steps into the workplace or further education.

-Olly (Year 10)

ET Australia Secondary College Parent Feedback

The commitment of the teachers at ET goes beyond just a job; it is a vocation that impacts the lives of these kids in profound and lasting ways. We are deeply appreciative of the continued support that our child receives at ET College, and we are so grateful for the positive influence you all have on his life.

- Rachel & Adrian

The school is wonderful. I have had nothing but support from all the staff & teachers. The Reception staff are lovely. My son has found his transition into high school seamless and enjoyable.

- Cilyse

ET has been the difference between my daughter embracing her learning and not. It has been so wonderful to watch her make connections with her peers and teachers. The staff are kind, attentive and highly capable of supporting her learning and emotional needs. It is a nurturing and fun place to continue her education. We are so thankful.

-Noeli

Our son Sam, in just one term, is a different child! He is happy to come to school, he is happy to talk about his day, but most importantly he seems proud of himself and his schoolwork. It is lovely to see him so positive about his education.

-Mel



Parent, Student and Teacher Satisfaction

ET Australia Secondary College Teaching Staff Feedback

I love being part of the ETASC community. In my role as Teacher on Duty, I find it incredibly rewarding to build genuine connections with students and form trusting relationships. Knowing that they feel safe, supported, and valued at our school gives real purpose to my work. Each day, I look forward to coming in. The staff are warm, welcoming, and always willing to support both students and their colleagues. I truly feel like I've found a second family here—among both my peers and the amazing young people we support.

- Jo

Being part of ET Australia Secondary College is an enriching and fulfilling experience. The strong connections formed between staff and students create a supportive and uplifting learning environment. The appreciation and respect shown by students make every effort meaningful, reinforcing the school's commitment to a positive and nurturing culture. The staff's dedication to building a strong culture ensures that students feel safe, valued, and excited to come to school each day.

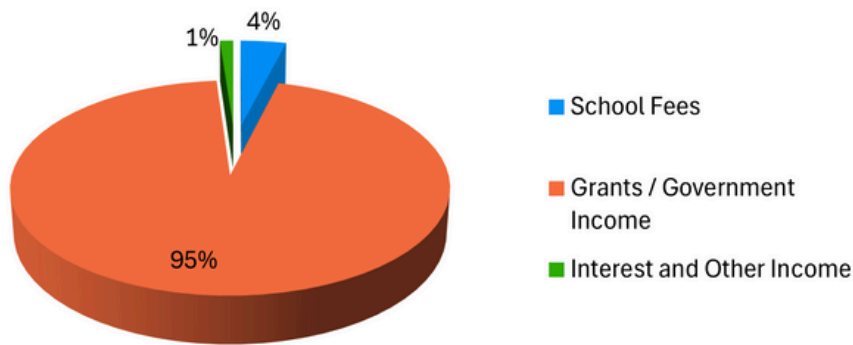
- Angus



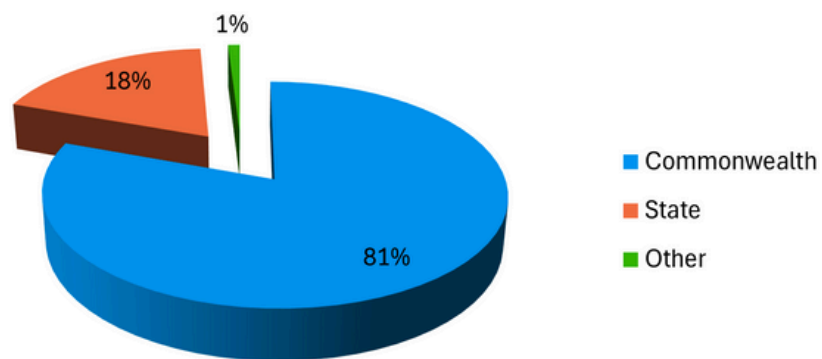
Summary Financial Information



Income Sources



Grants / Government Income



Expenditure

■ Salary & Salary Related Expenses ■ Non Salary Expenses

