

CHC33015

Certificate III in Individual Support (Ageing)

Overview

This unique employment program is being delivered in partnership between ET Australia and Peninsula Village, Umina Beach.

Training will be delivered on site at Peninsula Village providing hands on training in a real work environment with a view to employment as a Care Service employee with Peninsula Village.

Both organisations share a vision for the ways in which the entry level workforce needs to be prepared and trained. This has resulted in a collaborative partnership between the two organisations.

To be considered for employment with Peninsula Village, students must participate in a CHC33015 Certificate III in Individual Support (Ageing) employment program delivered onsite at Peninsula Village.

This training is subsidised by the NSW Government under the Smart and Skilled and Skilling for Recovery initiatives (eligibility criteria applies).

The program has been designed to meet Peninsula Village's need for entry level workers. There will be opportunities for employment for the best suited students with Peninsula Village on program completion to meet their current / emerging workforce needs.

This is a fantastic opportunity to become part of the Peninsula Village team who are dedicated to putting the needs of each individual first and who offer a warm and comfortable environment for their residents. They also pride themselves on rostering staff above the industry benchmark for care levels, meaning they have a higher ratio of staff to residents within their ageing in place facilities.



Contact ET Australia Training College today to enquire about this course

Phone: (02) 4323 1233 **Email:** training@etaustralia.com **Website:** www.etaustralia.com

Connect with us:  ET Australia  @ETAustralia  ET Australia  ET Australia

RTO ID 90084

This accredited qualification reflects the role of workers in the community and / or residential setting who follow an individualised plan to provide person-centred support to people who may require support due to ageing.

Students will learn how to meet the personal support needs of the older person, support their independence and well-being, use safe working practices for direct care work, and will learn how to work effectively in the aged care sector.

The combination of classroom-based learning with work placement provides the foundations required to work with aged people.

During the program, students must complete a minimum of 120 hours of work placement providing direct care support in at least one aged care, home and community, or community services organisation. To achieve these hours, students will practice their skills under the supervision of ET Australia's Trainer / Assessor and staff from Peninsula Village. Placement will help students to develop and consolidate skills and knowledge in a clinical environment. Throughout the program students will become familiar with Peninsula Village policies and procedures and employee expectations.

Entry Requirements

There are no formal entry requirements for this qualification however all successful applicants will be required to undertake a criminal history check to meet workplace regulatory requirements.

The Australian Government Department of Health and Ageing requires that any person who provides care within an aged care service must have a police check prior to being present 'on site'. Students must not have previous convictions which would exclude them from working in the aged care sector as outlined in the Aged Care Act 1997 (murder, sexual assault, any other form of assault which has resulted in a sentence of imprisonment or any other conviction which would be considered, on the basis of risk and relevance, to render them unsuitable for a vocational placement in an aged care setting).

All applicants will be interviewed initially by phone by an ET Australia representative. Successful applicants will then be invited to attend an information session.

Following on from the information session interested applicants are required to complete an application form and will be interviewed by an ET Australia representative for selection into the program.

Interviews are conducted with each applicant to determine their suitability for the program and their suitability for potential employment.

Aged care work can be emotionally and physically challenging and will be very hands on. Students must have the functional capacity and fitness to perform the tasks and duties necessary to work in the aged care sector. Students who, due to fitness or functional capacity, would place themselves or others at risk of harm or injury would be unsuitable for the program.

The HLTAID003 Provide first aid unit requires that students demonstrate performing single rescuer cardiopulmonary resuscitation (CPR) on an adult resuscitation manikin placed **on the floor**. If a student does not

have the ability to perform resuscitation and/or first aid to the performance standard as they are unable to physically meet the assessment requirements, then competency in this unit cannot be achieved.

It is recommended that students have sound digital skills (eg skills to send / receive an email, use the internet for research purposes, send / receive a text message)

Students are required to have sufficient language, literacy and numeracy skills and good communication and interpersonal skills.

All students must be prepared to participate in work placement (during work placement students must be able to commit to 6.30am to 2.30pm shifts). Participation in at least 120 hours of work placement is required to successfully complete the qualification.

In order to complete the practical components of this program students must demonstrate a level of maturity and discretion.

Prior to being onsite for the training students must have evidence of receiving: -
2021 influenza vaccination
COVID-19 vaccination (both doses)

Employment Opportunities

Following are examples of employment opportunities that may be available on completion of the program: -

Accommodation Support Worker, Assistant in Nursing, Care Assistant / Worker, Care Service Employees, Nursing Assistant, Personal Care Assistant, Residential Care Worker.

The stats below highlight the demand for aged care workers in one of Australia's largest employing industries.

Jobs by Industry

Australia's largest employing industries



Top Employing Occupations

- 1 Registered Nurses
- 2 Aged and Disabled Carers
- 3 Receptionists

Community and Personal Service Workers

40% employed in Health Care and Social Assistance

TOP EMPLOYING OCCUPATIONS

- 1 Aged and Disabled Carers
- 2 Child Carers
- 3 Waiters



Stats sourced from Australian Jobs 2021 <https://www.nationalskillscommission.gov.au/jobs-industry-0>

Further Study

Students who successfully complete this qualification may choose to further their studies to a higher level in a related area such as CHC43015 Certificate IV in Ageing Support.

Students who successfully complete this qualification may also choose to further their studies at the same level and undertake units from the specialised elective unit streams available within the CHC33015 Certificate III in Individualised Support qualification e.g. Disability specialisation.

Students may elect to further their studies in more specialised qualifications at a higher AQF level from the Community Services Training Package.

Structure

This program will be delivered on site at Peninsula Village and combines classroom sessions with work placement.

Students are required to participate **in all** scheduled classes unless arranged otherwise with an ET Australia Representative.

Students are required to complete at least 120 hours of work placement. Both the classroom and work placement components of the program will take place at Peninsula Village.

Training Days: Classroom days – Mondays, Tuesdays, Thursdays
(2 blocks of work placement will be integrated throughout the program)

Dates: 31 January 2022 – 14 June 2022

Venue: Peninsula Village, 91 Pozieres Avenue, Umina Beach
Please note, there may be occasions when you are required to come into ET Australia, Gosford to attend training days. You will receive notification in advance should there be a change to the training venue.

Times: 9.00am to 3.00pm (**except for first aid training which is 9.00am to 4.00pm and during work placement which will require early morning starts**).

Note: The program hours are Centrelink approved and are considered to be full-time over the period.

Units of Study

Code	Title	Core Unit	Elective Unit
CHCCCS015	Provide individualised support	✓	
CHCCCS023	Support independence and well being	✓	
CHCCOM005	Communicate and work in health or community services	✓	
CHCDIV001	Work with diverse people	✓	
CHCLEG001	Work legally and ethically	✓	
HLTAAP001	Recognise healthy body systems	✓	
HLTWHS002	Follow safe work practices for direct client care	✓	
CHCAGE001	Facilitate the empowerment of older people		✓
CHCAGE005	Provide support to people living with dementia		✓
CHCCCS011	Meet personal support needs		✓
HLTHPS006	Assist clients with medication		✓
HLTAID003	Provide first aid *		✓
HLTINF001	Comply with infection prevention and control policies and procedures		✓

* This unit is delivered by Vital First Aid (RTO ID 90531) <https://www.vitalfirstaid.com.au/> under an approved Smart and Skilled subcontract arrangement (approval number TMO_0002022_566). Under this subcontract arrangement ET Australia will maintain responsibility to ensure the quality of the training and assessment, develop the training plan, manage complaints and issue certification. Vital First Aid will be responsible for the delivery and assessment of the first aid unit.

How will I be assessed, and do I need to complete activities outside of the classroom sessions?

A variety of assessment techniques will be used.

Students are required to attend all scheduled classes and participate in at least 120 hours of compulsory work placement.

Students must successfully complete **all** assessment activities for each unit to achieve the qualification. Types of assessment activities include question and answer activities, case studies, simulations, workbook activities, projects, reflective journals, practical on the job assessments and workplace hours logs.

Students are required to complete learning / assessment activities outside of classroom hours, the amount of time required will vary from student to student. As a general rule, the same amount of time spent in class should also be spent outside the classroom. Your trainer will prescribe the additional activities for you, which will include revision, learning and preparation for assessment.

Eligibility and Student Fees (Subsidised Training Place)

This training is subsidised by the NSW Government under the Smart & Skilled initiative.

To be eligible for a subsidised training place, at the time of enrolment an individual must:

- Be an Australian citizen, a permanent Australian resident, a humanitarian visa holder or a New Zealand citizen, and
- Be aged 15 years or older, and
- Live or work in New South Wales, and
- No longer be at school or equivalent

For further information relating to eligibility please visit the following web page

<https://smartandskilled.nsw.gov.au/are-you-eligible>

Eligibility for ‘Skilling for Recovery’ – Fee Free Training – available only for enrolments prior to end 2021

Skilling for Recovery is a NSW Government initiative to deliver JobTrainer funding in NSW. It provides fee free training to eligible applicants. If you meet the Smart & Skilled Program eligibility above and one of the following you could complete this training fee free:

- 16-24 years old (employed or not)
- A Veteran
- Veteran’s Recognised Partner
- In receipt of a Commonwealth Government benefit as specified in Attachment 1 (and their dependants)
- Unemployed (with or without a benefit); or
- At risk of unemployment *

* *Examples of people at risk of unemployment include:*

- Stood down/furloughed employee: Employee that has been stood down or an employee who previously would have been on JobKeeper and is at risk of becoming unemployed and requires upskilling or reskilling for new role and employment elsewhere.
- Person starting a job (employed for 6 months or less): employed on condition of receiving training to build capacity and capability for the job role. This would be within the first 6 months of employment.
- Low skilled/unskilled employee: Existing employee, with or without relevant skills or previous qualification up to Certificate III, that requires training to upskill to secure ongoing employment or future employment.
- Workers in declining industries: Workers at any company in an agreed declining industry (e.g. international travel industry) who require upskilling/reskilling for redeployment.

Course Cost

If you meet the above eligibility criteria for the Smart & Skilled Training Program but you are not eligible for ‘Skilling for Recovery’, the course cost is as follows:

Concession Fee	First Qualification	Second or Further Qualification
\$240	\$1,450	\$1,750

Further information relating to the student fees can be found by visiting the following web page <https://smartandskilled.nsw.gov.au/for-students/how-much-will-your-course-cost>

Payment plans are available – speak to an ET Australia Representative to discuss your individual circumstances.

For further information about fee exemptions and eligible benefits that will allow a concession fee please refer to Attachment 1.

How can I enrol?

Limited **fee free scholarships** are available for eligible students who are 15-30 years of age and either a Commonwealth Welfare recipient or the dependant of a Commonwealth Welfare recipient.

For further information relating to Fee Free Scholarships please visit the following website
<https://smartandskilled.nsw.gov.au/for-students/scholarships/fee-free-scholarships>

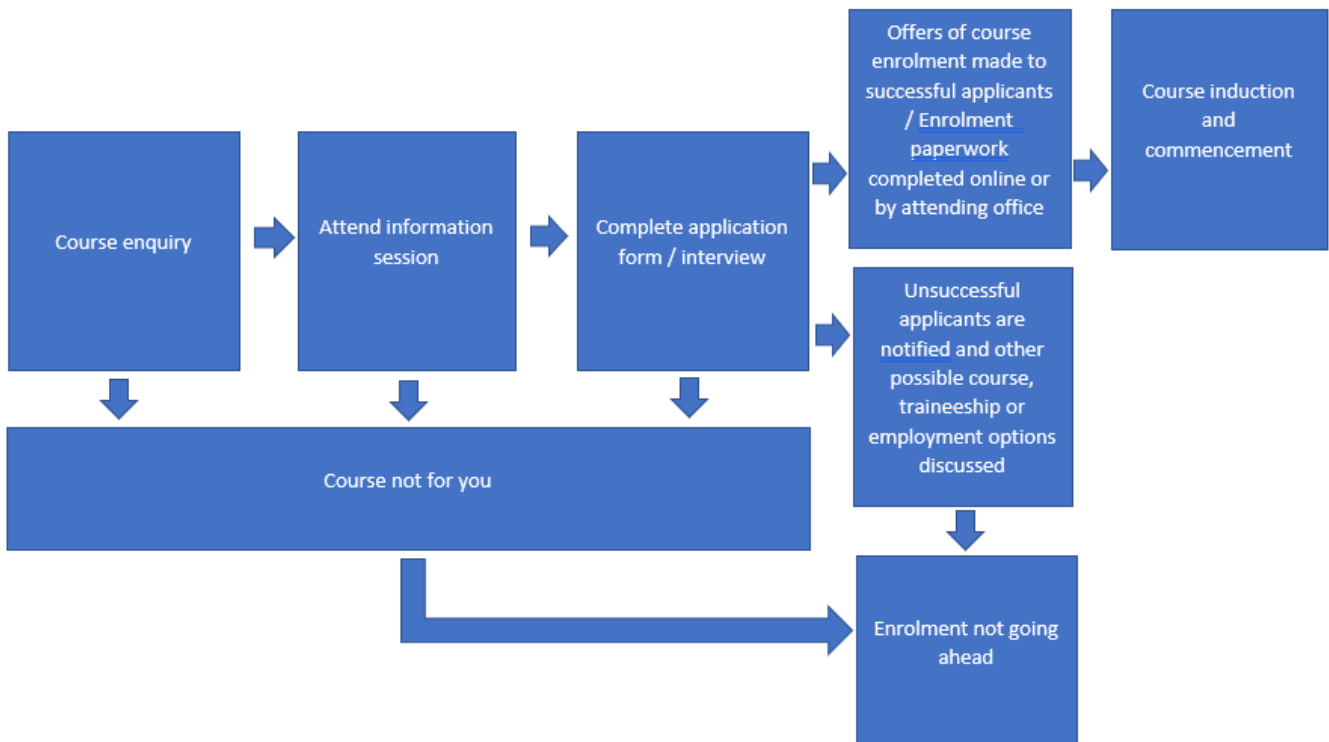
Students with a disability or Aboriginal and Torres Strait Islander students are also eligible for a fee exemption. Evidence of eligibility for a fee exemption will be required.

Where Can I Obtain Additional Information?

Pre-enrolment information is available and will assist prospective students to make an informed choice prior to enrolling. The pre-enrolment information can be accessed via our website and should answer any additional questions a prospective student may have.

Alternatively, please call our office on 4323 1233 or email training@etaustralia.com to get in contact with an ET Australia's Training College Product Specialist.

Attendance is required at an interview for selection into the program. Following on from the information session applicants are invited to complete an application form and participate in an interview. Offers of enrolment will then be made to suitable applicants.



To register your interest please call ET Australia on 4323 1233 or email training@etaustralia.com

If you are accepted into the program, you will need to obtain a Unique Student Identifier (USI) before you enrol. For more information visit <http://www.usi.gov.au/Pages/default.aspx> or speak with an ET Australia representative.

Attachment 1 - Fee exemptions and concessions

Students who qualify for a **fee exemption** are:

- Australian Aboriginal or Torres Strait Islander people
- People with a disability (ie people who meet the disability fee exemption criteria, including the dependent child, spouse or partner of a recipient of a Disability Support Pension).
- Recipients of Fee-Free Scholarships

A student who receives a specified Commonwealth benefit or allowance is eligible for a **concession fee** for a qualification up to and including a Certificate IV. A student who is receiving an eligible benefit or allowance at the time of enrolment is eligible for a concession.

The concession fee is also available to a student who is a dependant of a person receiving a specific Commonwealth benefit or allowance. To be eligible for the concession the person who the student is a dependant of must be receiving the benefit or allowance at the time of enrolment.

The specified Commonwealth benefits and allowances for concession fees include:

- Age Pension
- Austudy
- Carer Payment (this category does not include the Carer Allowance or Carer Adjustment Payment)
- Disability Support Pension
- Family Tax Benefit Part A (maximum rate)
- Farm Household Allowance
- JobSeeker Payment
- Parenting Payment (Single)
- Special Benefit
- Veterans' Children Education Scheme
- Veterans' Affairs Pensions
- Widow Allowance
- Youth Allowance